

\$799,000

 **mikegreerhomes**



**HIGHSTED**

Residential

Location of a Lifetime

## Highsted Residential

Lot 86, Highsted

4



1



2



3



1



2



# for sale

dwelling size

192m<sup>2</sup>

section size

376m<sup>2</sup>

home  
and  
land

Offering four bedrooms (master bedroom with ensuite and walk-in robe), a sunny open plan kitchen, dining and living area, study nook, two separate toilets, and a double garage this fabulous property is ready for you to call it home. Living areas along with the master bedroom suite flow outside onto a impeccably landscaped exterior and patio, perfect for summer bbqs with friends and family.

Set on an easy care section in the superior development of Highsted Residential, it is a perfectly placed location in the Northwest corner of Christchurch, with easy access to the central city, the Northern Motorway, the Johns Road ring road to the airport and the South. You'll love having the established amenities of Northwood, Bishopdale Mall and Northlands Mall nearby.

### more features.

- ✦ Main bedroom with ensuite and WIR
- ✦ North facing living area
- ✦ Two separate toilets
- ✦ Study nook
- ✦ Double garage with internal access
- ✦ Fully landscaped

bringing you **more.** Auckland • Nelson • West Coast • North Canterbury • Canterbury • Mid & South Canterbury • Wanaka

[www.highsted.co.nz](http://www.highsted.co.nz)

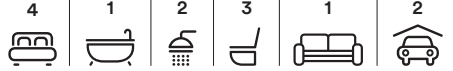
Michelle Allan  
Sales Manager  
Highsted Residential

03 355 5111  
027 334 1177  
[michelle@highsted.co.nz](mailto:michelle@highsted.co.nz)

# Highsted Residential Lot 86, Highsted

dwelling size  
192m<sup>2</sup>

section size  
376m<sup>2</sup>

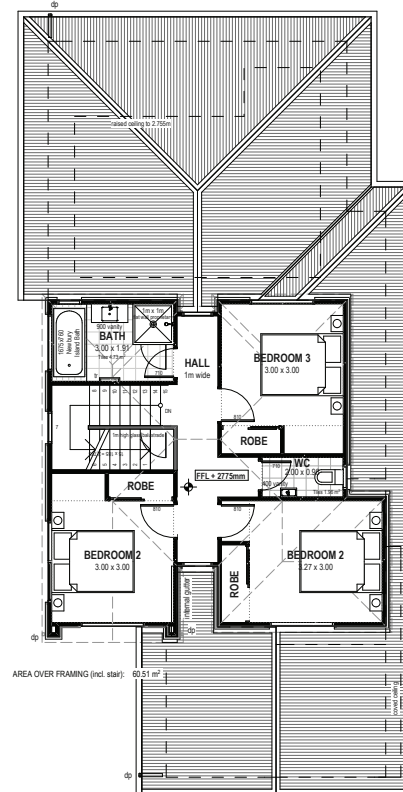
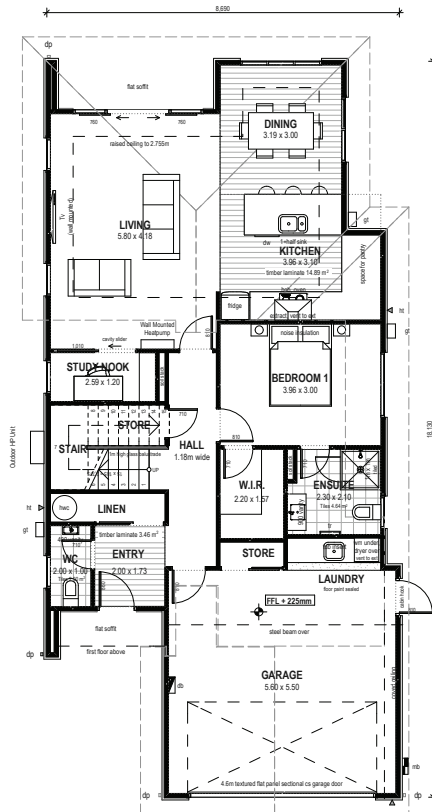


bringing you **more.**

**Concision**  
Panelised technology

<http://concision.co.nz>

© Copyright Mike Greer Homes Ltd



## Energy Efficient

Your new home isn't just built for today, it's built for the future. Our designs go above and beyond current industry standards in energy efficiency to create greater comfort and ensure long-term savings for both yourself and the environment.



## Intelligent Design

As an accredited Lifemark partner, our homes are independently recognised for being well-designed and safe to live in – for a lifetime. We continually innovate in order to uphold world-class standards in home design without compromising affordability.



## Peace of Mind

As registered members of the industry-leading Master Builders Federation of New Zealand we offer all new home buyers a 10 Year Master Build Guarantee. This guarantee, along with our comprehensive After Sales Care programme, means you can rest easy knowing you're protected.



## Free Design

With over 700 base plans you may be looking at the one that's absolutely perfect for you, or you may wish to modify it to make it your own. Our highly experienced team of in-house designers can customise each plan to suit your individual site, budget and style.



## Fixed Price

Our fixed price contracts are just that – fixed. There are no surprises – all landscaping, fencing, driveways and floor coverings are included. You pay a deposit and nothing further until completion.



## Quality Assurance

Our reputation for quality is as important to us as it is to you. With 25 years of award-winning experience, a team of fully qualified contractors, and a comprehensive Quality Assurance programme, you can trust that your home is constructed with care and professionalism.



## Specifications

Our wide array of specifications is where your home truly comes to life. Choose from a range of fixtures and fittings from today's most reputable brands. Let your imagination run wild or if you prefer we can suggest options to suit your needs and style.