

FOR SALE
Price by Negotiation



4 2 2 2

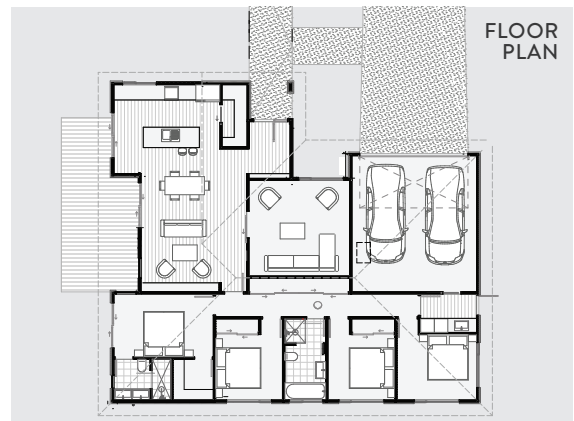
Lot 20, 262 on Highsted

Designed by Foster Architecture, and built by Hazeldine you'll feel right at home in this stunning 4 bedroom home nestled in the popular, country style Highsted subdivision.

With 2 living areas, 4 double bedrooms, 2 fully tiled bathrooms including underfloor heating, and a stunning Trenz kitchen with Tristone benchtops & feature wood panelling, plus walk in pantry with loads of storage.

Ducted heatpumps and solartubes will keep this home light and cosy in cooler months, while the Kwila decking connects living areas, kitchen and dining spaces for seamless summer living. This house & land package is an absolute must view for families after style and space.

HOUSE 191m² | LAND 434m²



Enquiries to Andrew McGuire

P. 03 327 6329 M. 027 429 6299

E. a.mcguire@hazeldine.co.nz

 **Hazeldine
Construction**